

# NEWINGTON COLLEGE CASCADE GUTTER SYSTEM

Presented By Tom Westcott  
Alfresco Shade

1

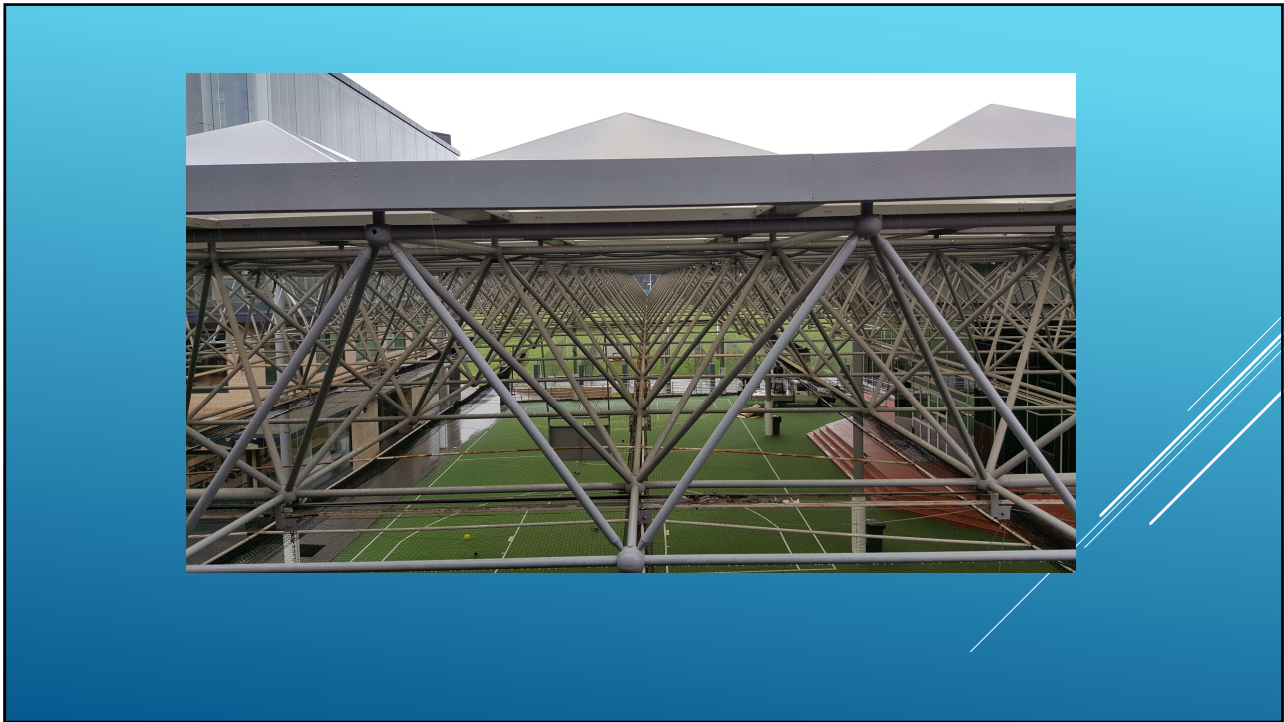
Old Polycarb Pyramids



New Fabric Pyramids'



2



3

Gutters were rusting out



Domes were very brittle



OVER 20 YEARS OF SERVICE WITH  
LITTLE MAINTENANCE

4



## A NEW LIK WAS NEEDED

After analysis by James Marr of Tensys it was decided to cantilever off the concrete structure rather than attach to the spaceframe.

5



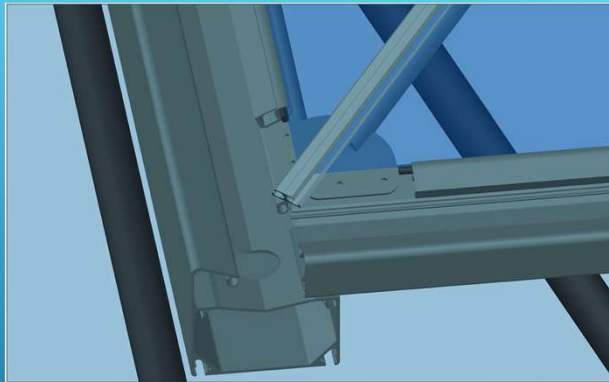
## THE DESIGN OF THE SYSTEM

6



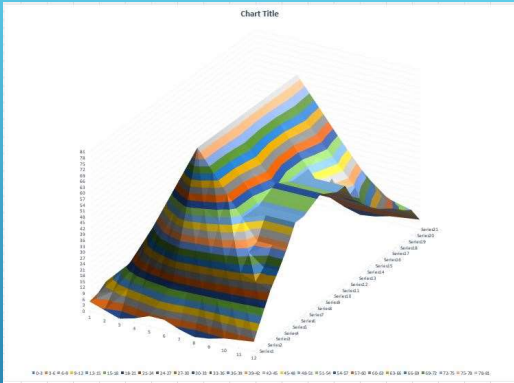
4 PANEL PYRIMID DOME 4 X 4

7



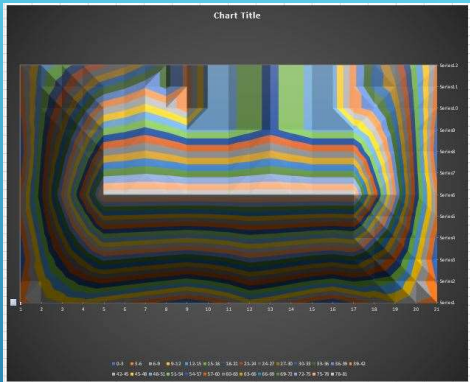
CORNER DETAIL

8



# CONTOUR MAP OF THE GUTTER SYSTEM

9



# CONTOUR MAP OF THE GUTTER SYSTEM

10



CONSTRUCTION OF THE LINK FRAME

11



LINK WITH THE FABRIC IN PLACE

12



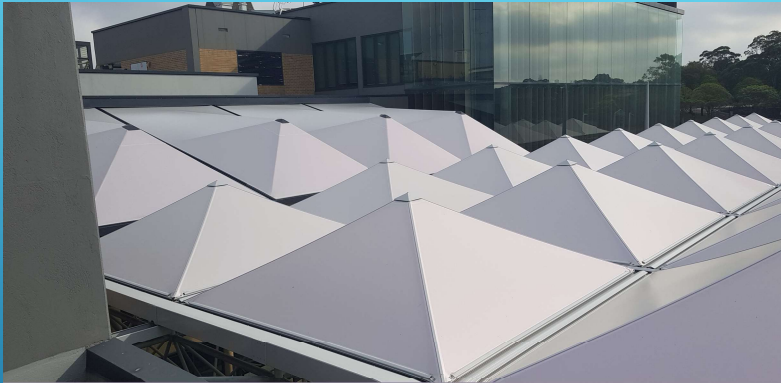
FIRST OF THE PYRIMIDS IN PLACE

13



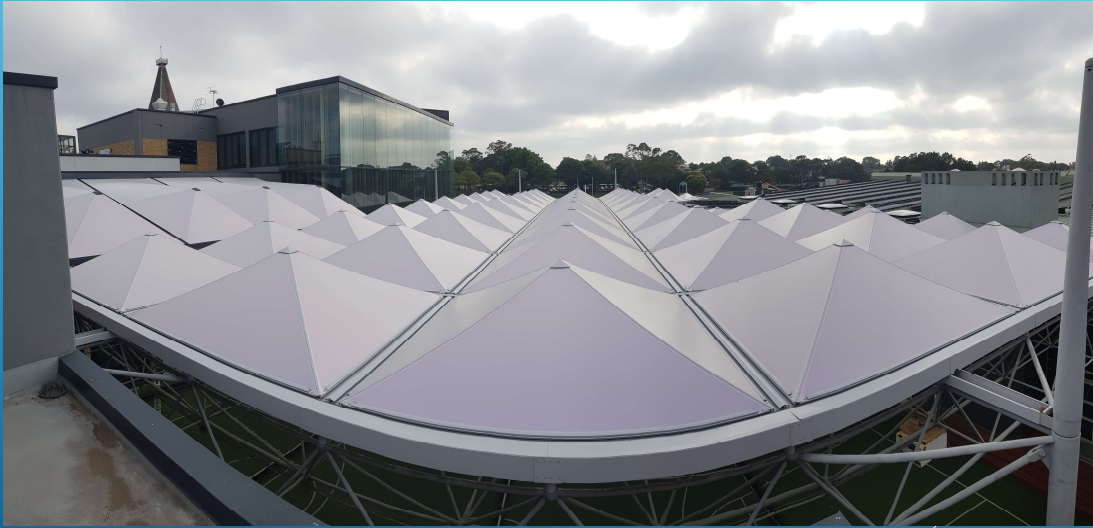
ALL STANDARD PYRIMIDS IN PLACE

14

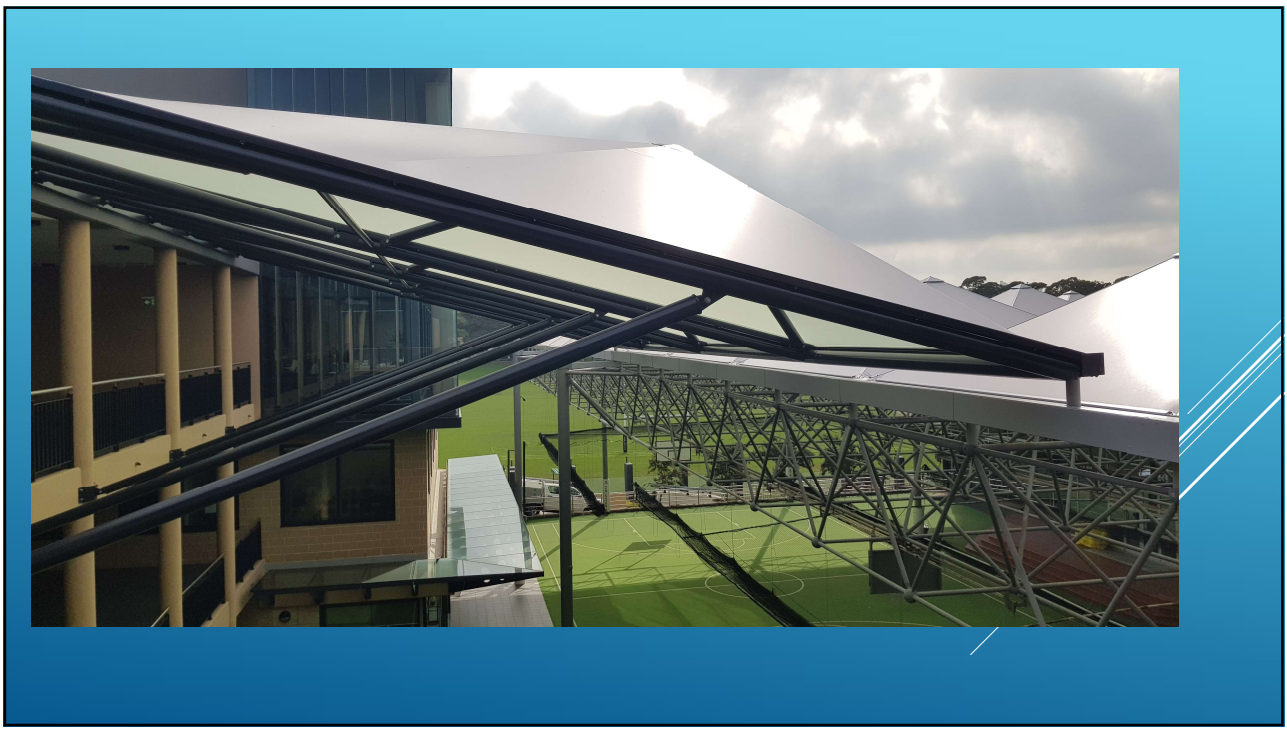


FINISHED ROOF STRUCTURE

15



16



17



18



19



20



21